

To assemble the template, put your printed pages in order according to row number, then column number (Row A/Column 1, Row A/Column 2, Row B/Column 1, etc.). Lay the printed pages out from left to right, top to bottom, overlapping each sheet and aligning the square hashtags. Adhere pages together with clear tape.



Row A, Column 1

Sun-Dress

Part:1

PLACE ON

FRO
(Cu

Row B, Column 1

Sun-Dress

Part:1

Row C, Column 1

Sun-Dress

Part:1

BACK
(Cut 1)

PLACE ON FO

Row A, Column 2

Sun-Dress

Part:1

NT FOLD

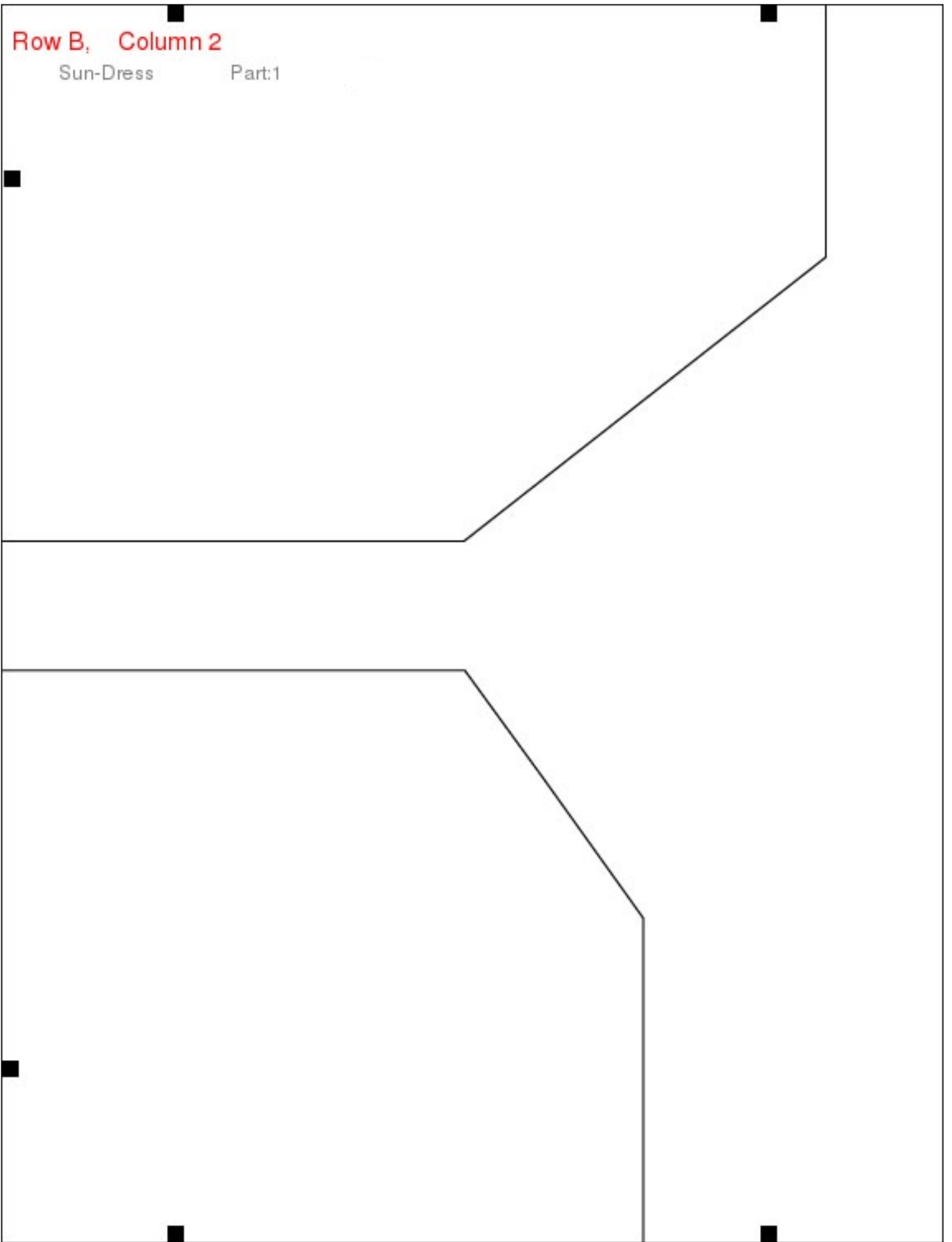
NT
(1)

SELVAGE EDGE

Row B, Column 2

Sun-Dress

Part:1



Row C, Column 2

Sun-Dress

Part:1

SEI VAGGE EDGE

OLD

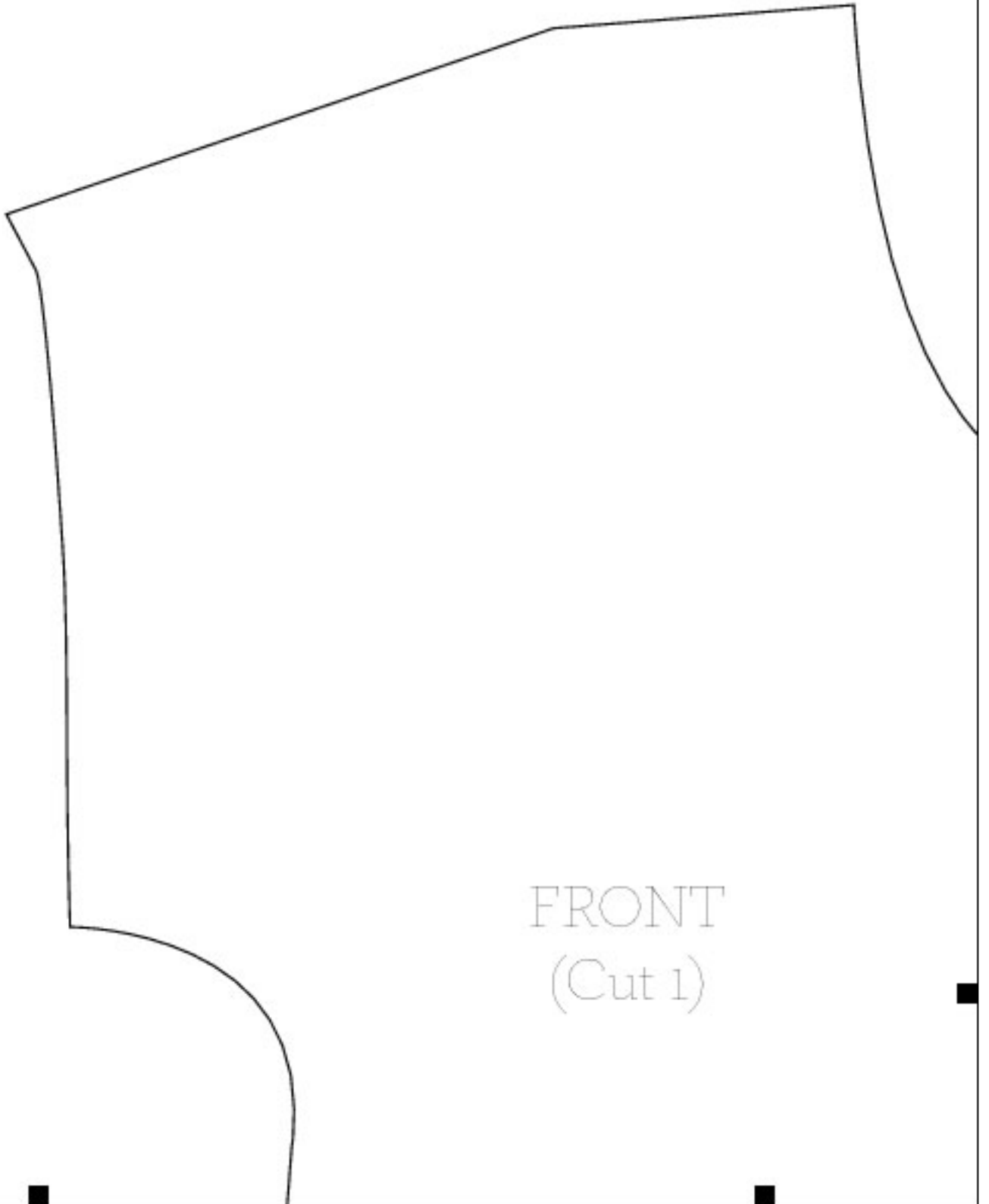
To assemble the template, put your printed pages in order according to row number, then column number (Row A/ Column 1, Row A/Column 2,...Row A/Column 4, Row B/Column 1, etc.). Lay the printed pages out from left to right, top to bottom, overlapping each sheet and aligning the square hashtags. Adhere pages together with clear tape.



Row B, Column 1

Drop-Shoulder

Part:1

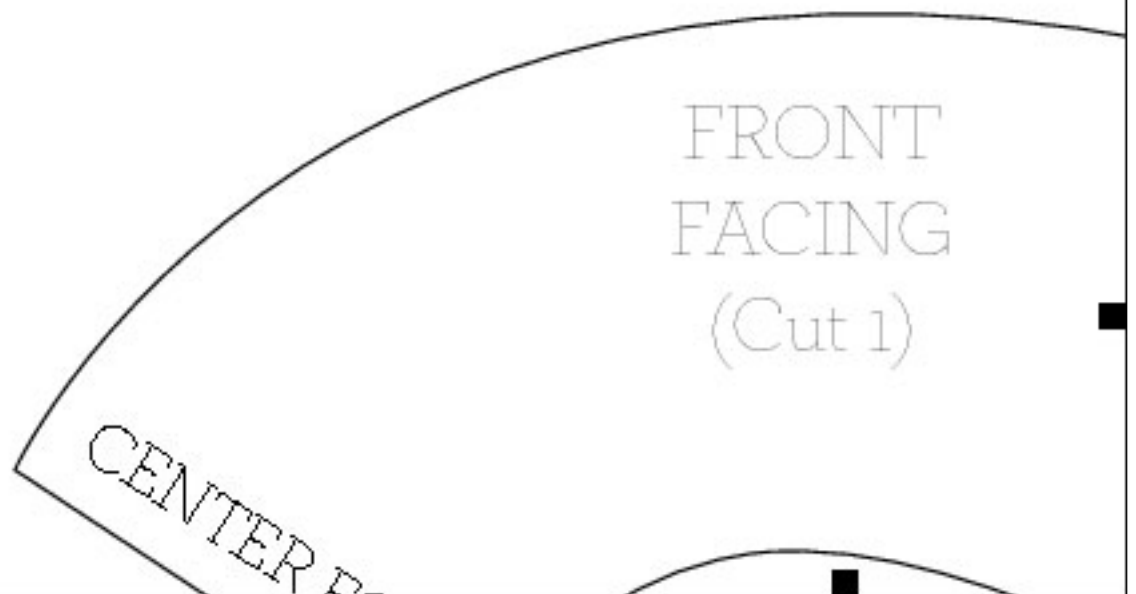
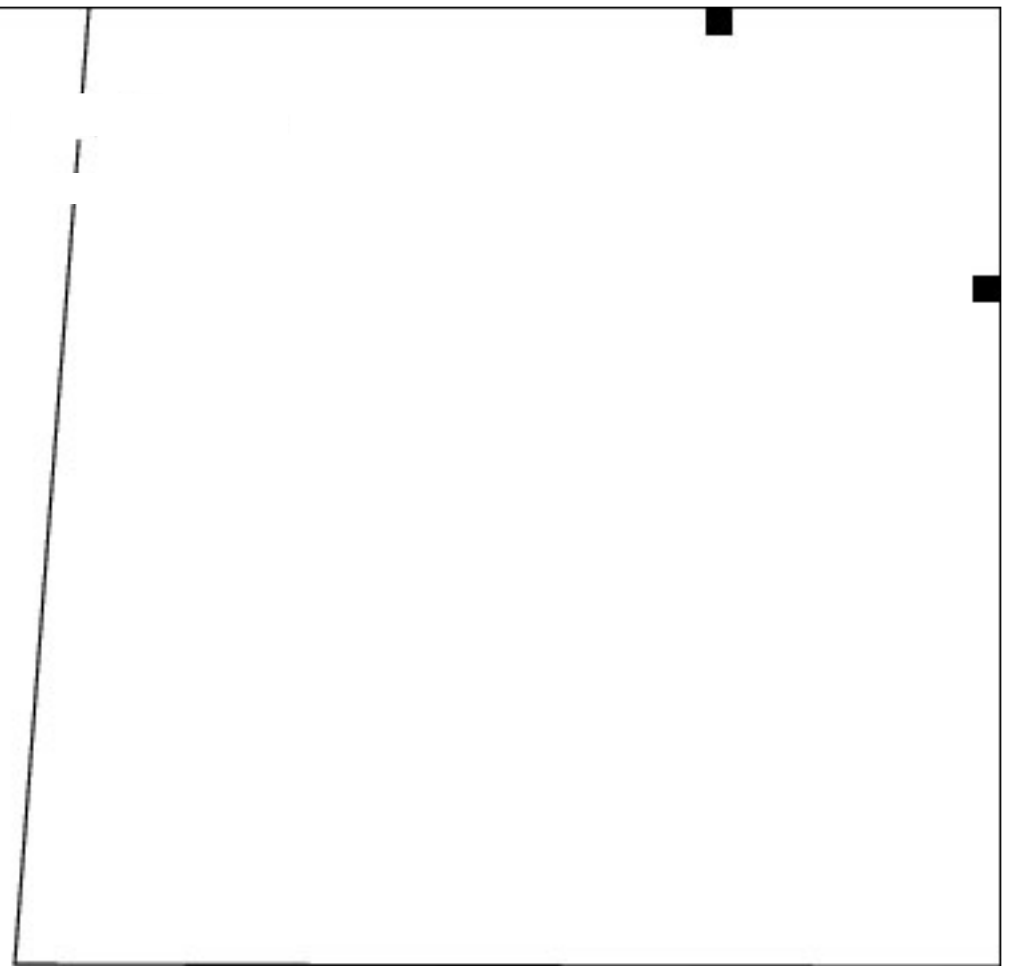


FRONT
(Cut 1)

Row C, Column 1

Drop-Shoulder

Part:1



Row D, Column 1

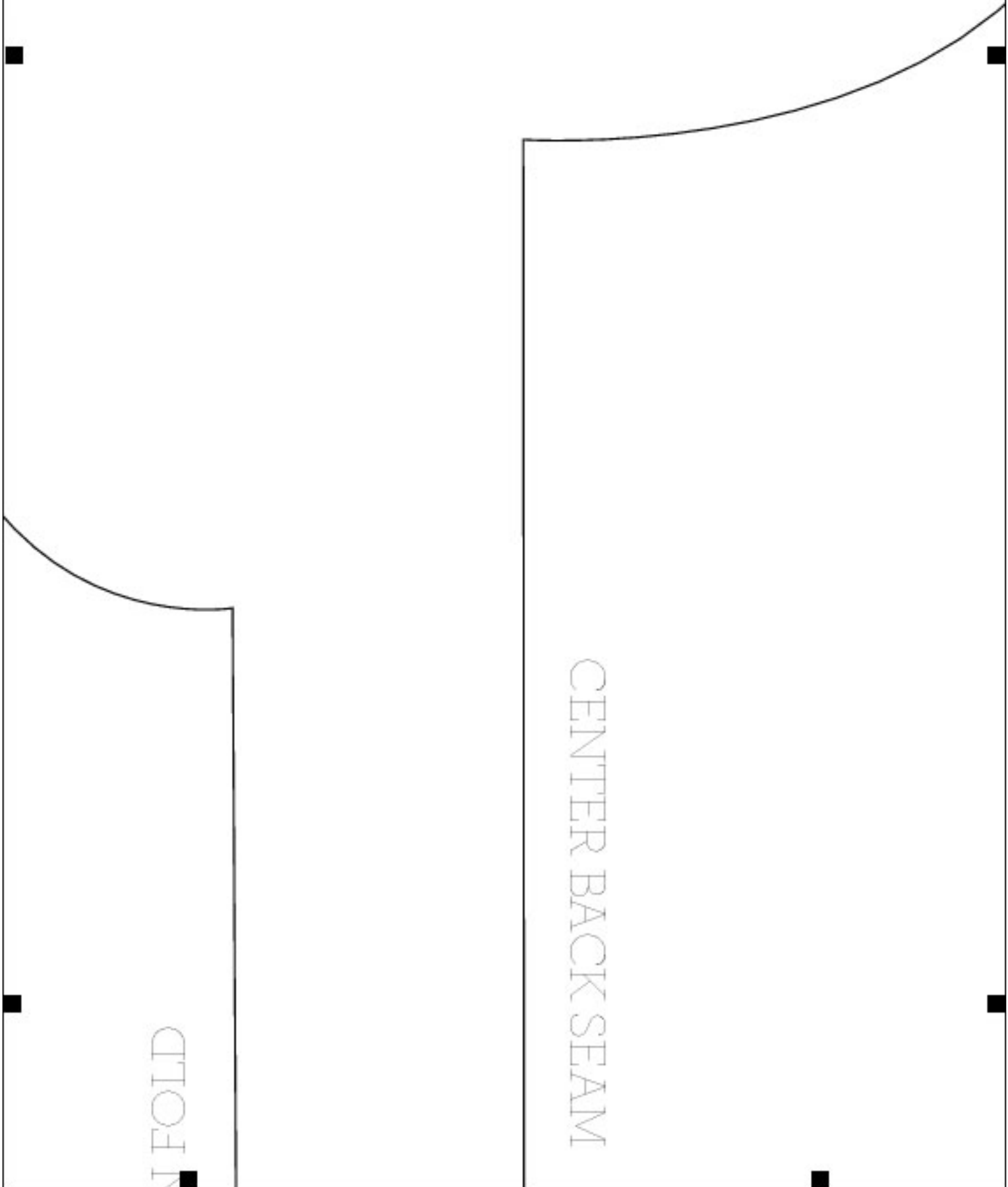
Drop-Shoulder Size:1 Part:1 www.printsew.com

FOLD

Row B, Column 2

Drop-Shoulder

Part:1



Row C, Column 2

Drop-Shoulder

Part:1

PLA

CENTER BACK SE

BAO
FAC
(Cu

Row D, Column 2

Drop-Shoulder

Part:1

ME



Row A, Column 3

Drop-Shoulder

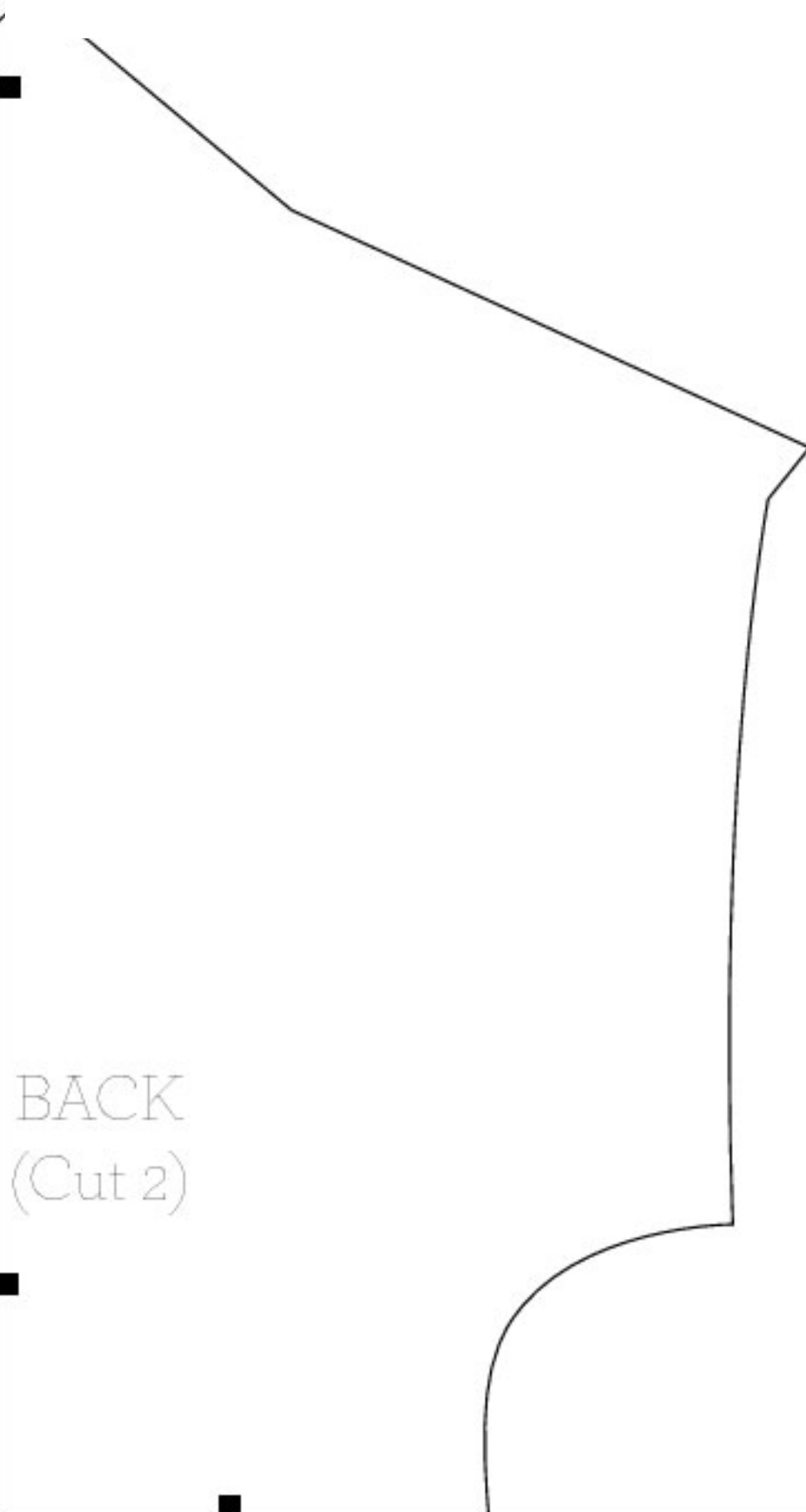
Part:1



Row B, Column 3

Drop-Shoulder

Part:1

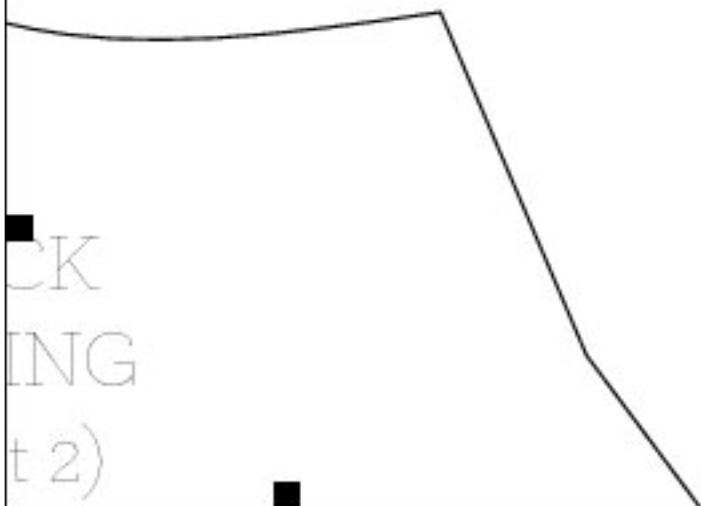


BACK
(Cut 2)

Row C, Column 3

Drop-Shoulder

Part:1



Row D, Column 3

Drop-Shoulder

Part:1

Row A, Column 4

Drop-Shoulder

Part:1



Row B, Column 4

Drop-Shoulder

Part:1

RUFFLE
(Cut 2)

Row C, Column 4

Drop-Shoulder

Part:1

Row D, Column 4

Drop-Shoulder

Part:1

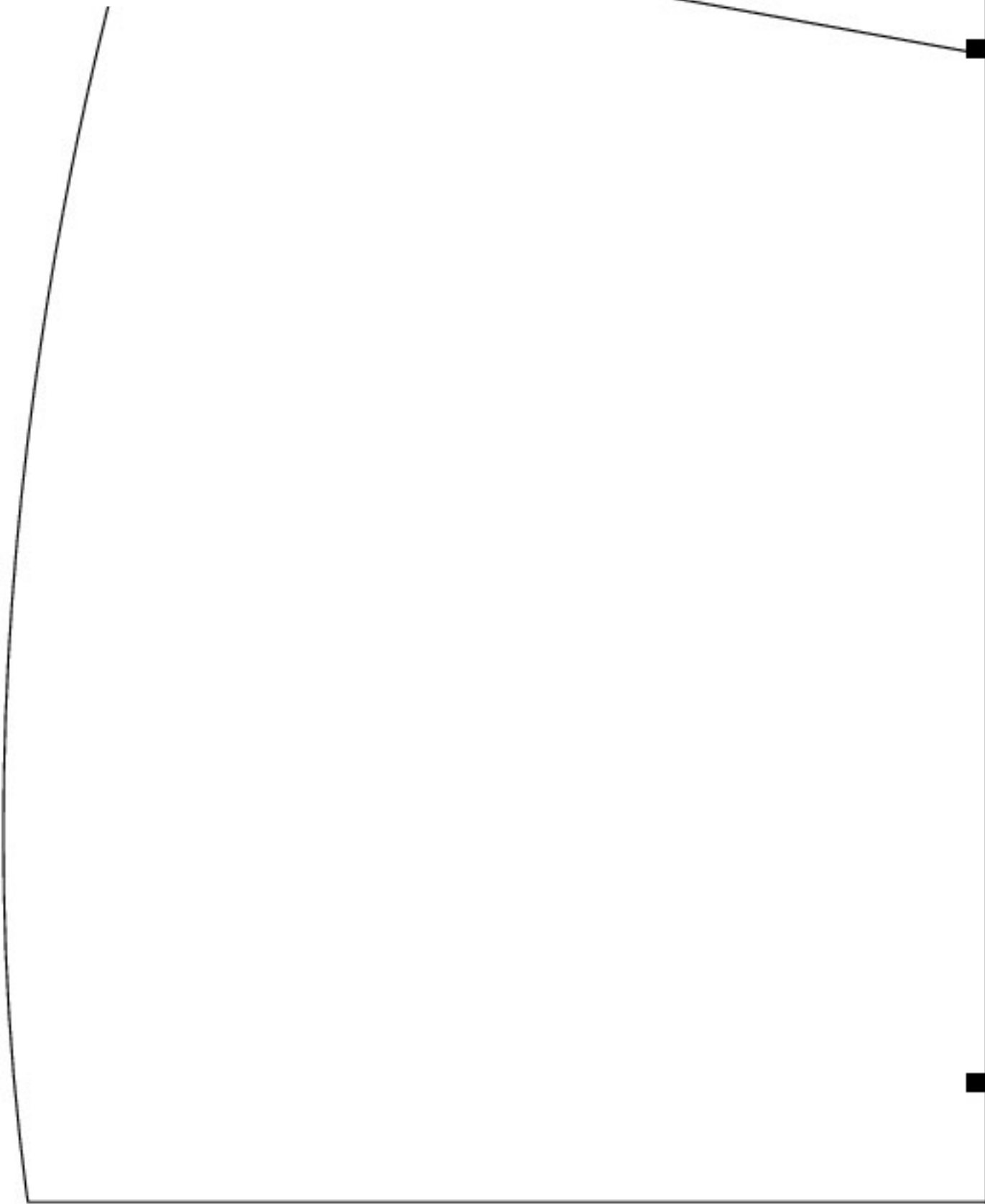
To assemble the template, put your printed pages in order according to row number, then column number (Row A/Column 1, Row A/Column 2, Row A/Column 3, Row B/Column 1, etc.). Lay the printed pages out from left to right, top to bottom, overlapping each sheet and aligning the square hashtags. Adhere pages together with clear tape.



Row A, Column 1

Tunic-Dress

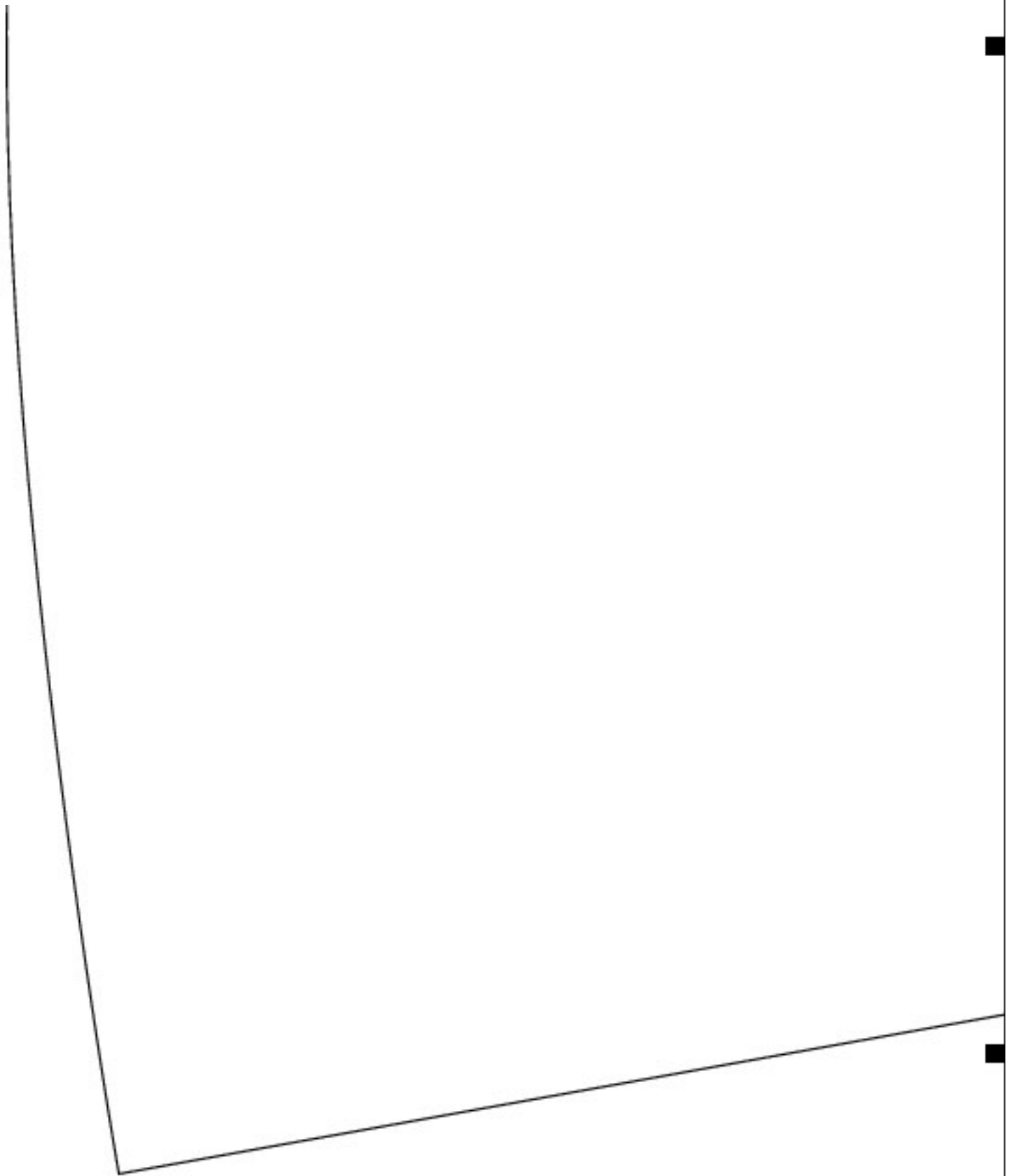
Part:1



Row B, Column 1

Tunic-Dress

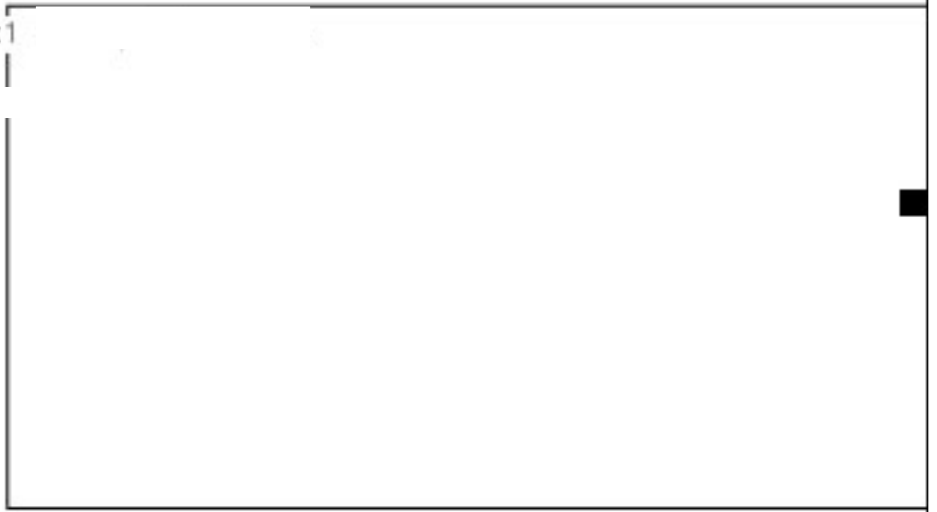
Part:1



Row C, Column 1

Tunic-Dress

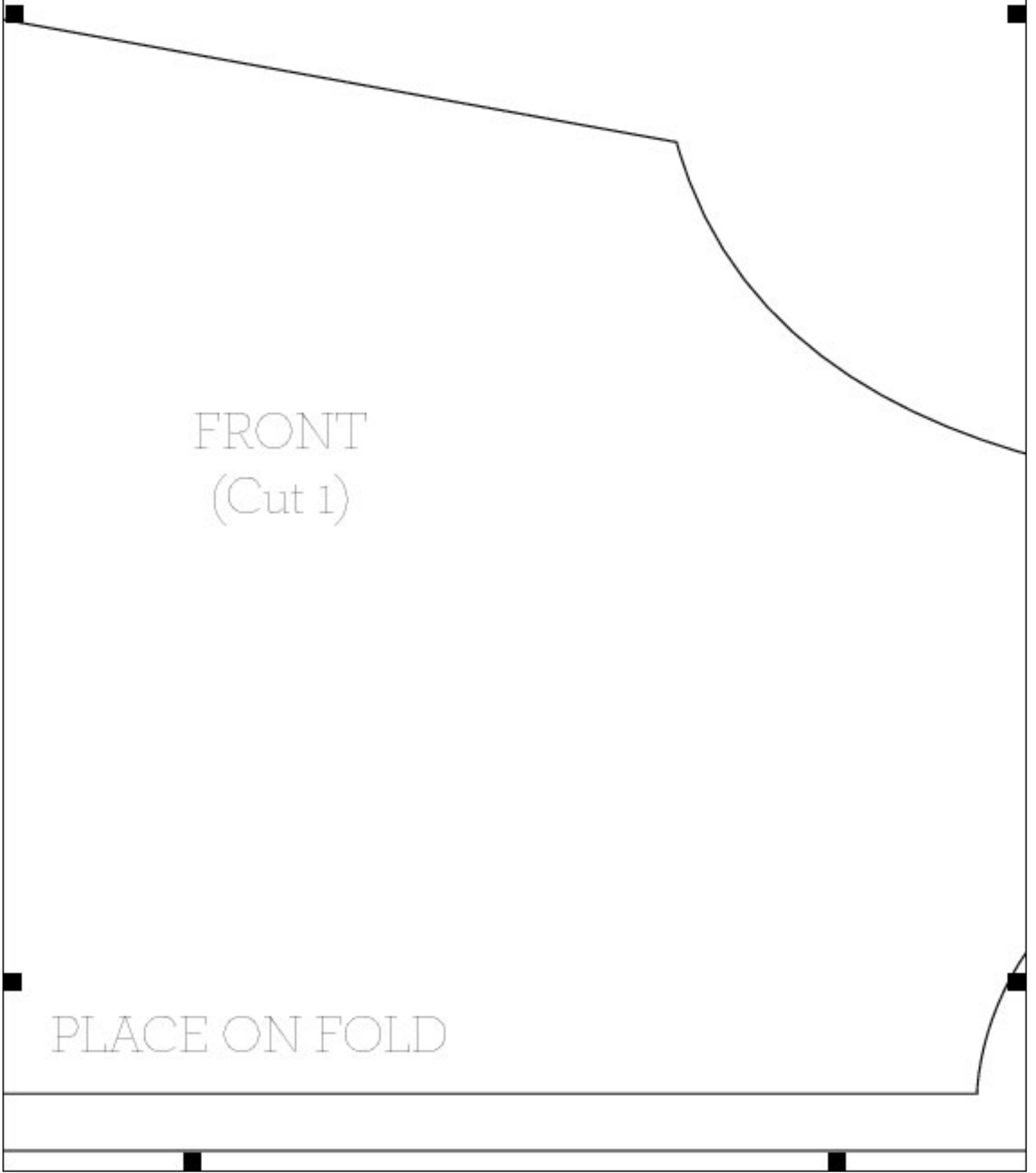
Part:1



Row A, Column 2

Tunic-Dress

Part:1



FRONT
(Cut 1)

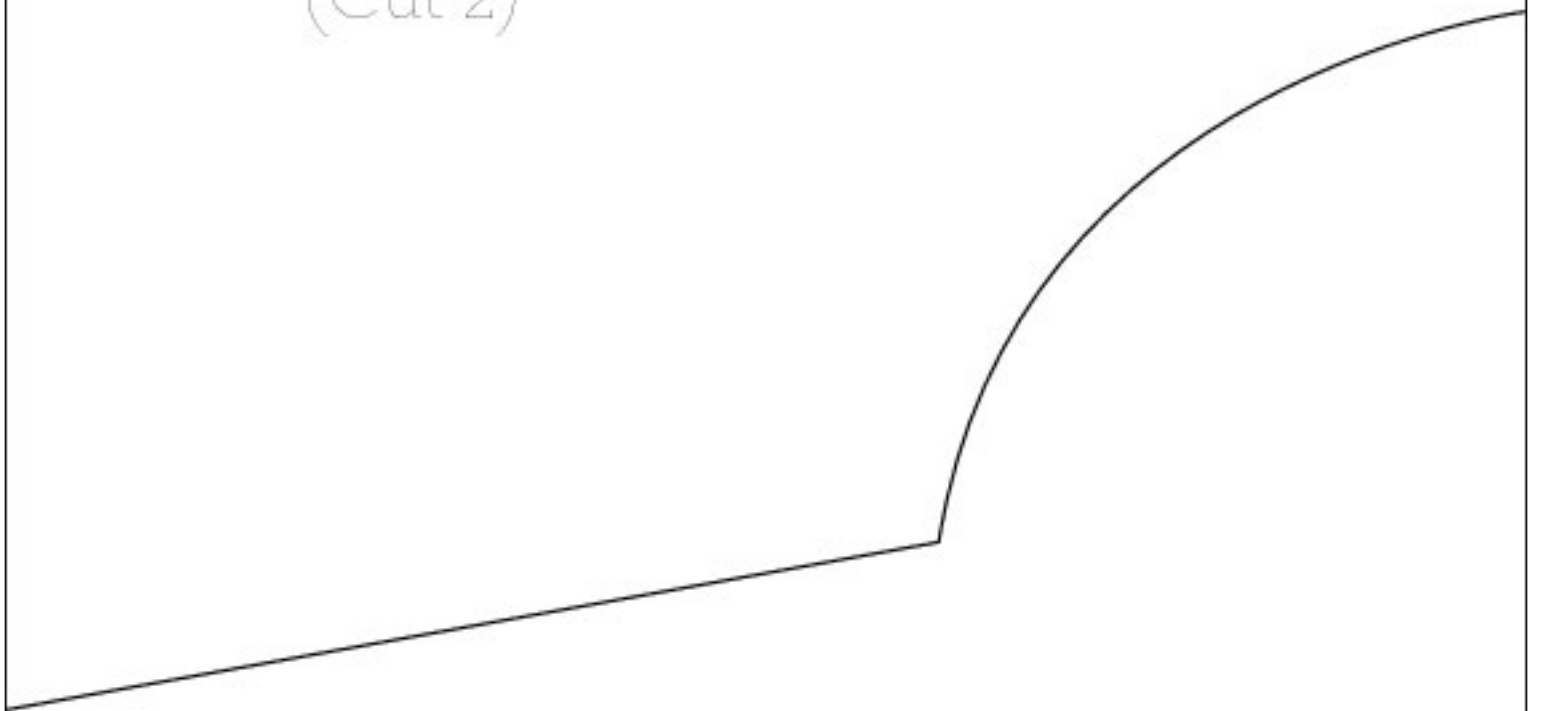
PLACE ON FOLD

Row B, Column 2 CENTER BACK SEAM

Tunic-Dress

Part:1

BACK
(Cut 2)



Row C, Column 2

Tunic-Dress

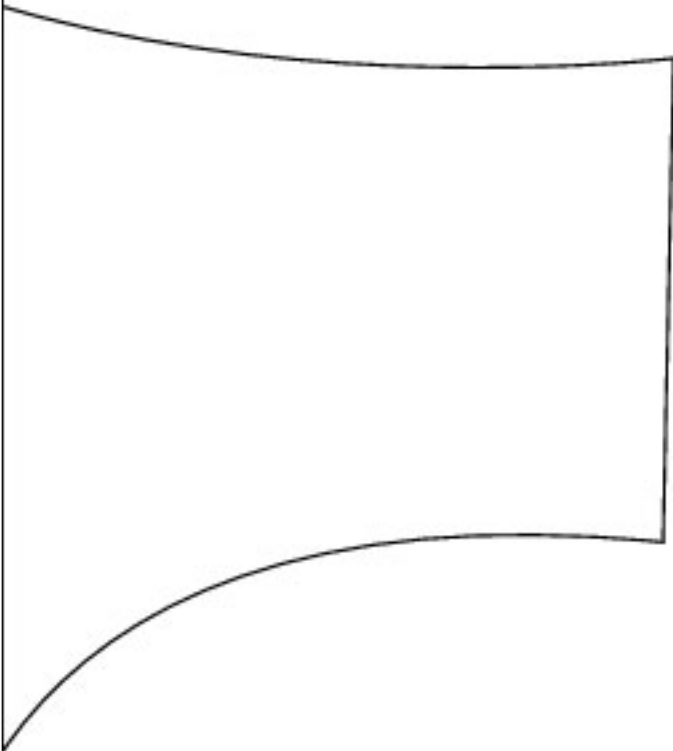
Part:1

RUFFLE
(Cut 2)

Row A, Column 3

Tunic-Dress

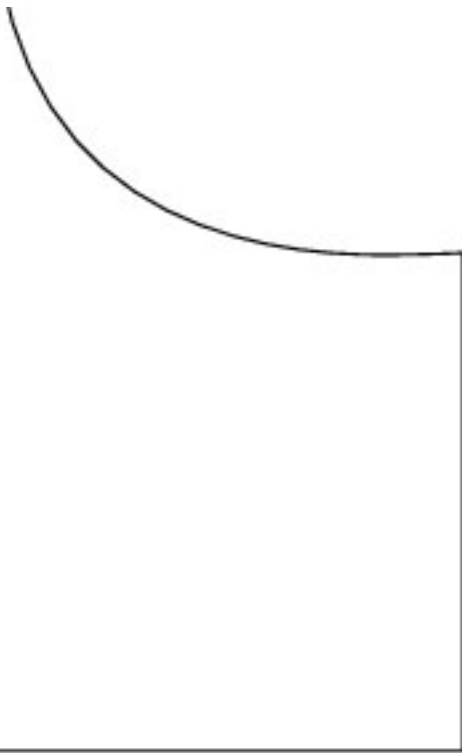
Part:1



Row B, Column 3

Tunic-Dress

Part:1



Row C, Column 3

Tunic-Dress

Part:1

PLACE ON F

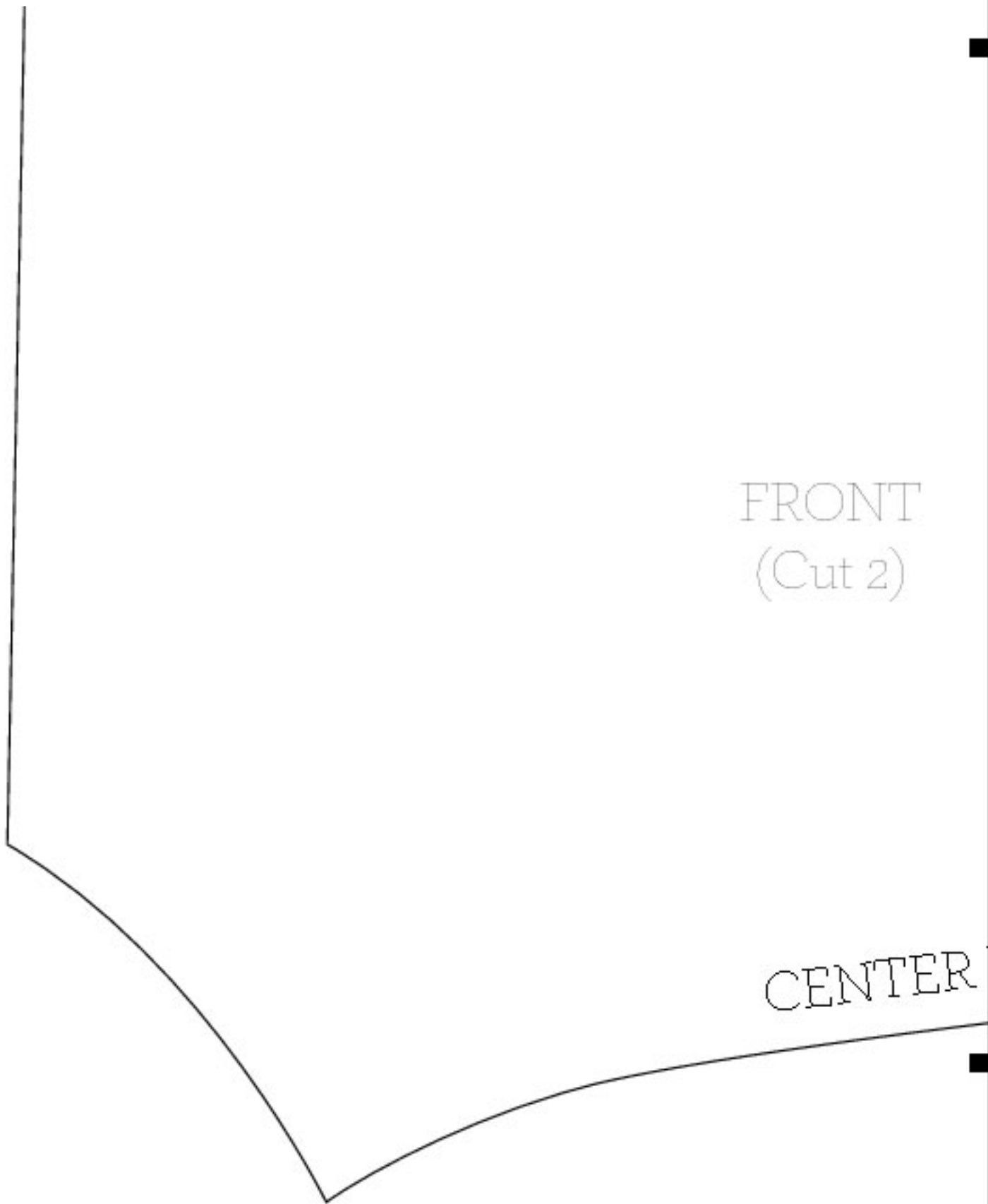
To assemble the template, put your printed pages in order according to row number, then column number (Row A/Column 1, Row A/Column 2, Row B/Column 1, etc.). Lay the printed pages out from left to right, top to bottom, overlapping each sheet and aligning the square hashtags. Adhere pages together with clear tape.



Row A, Column 1

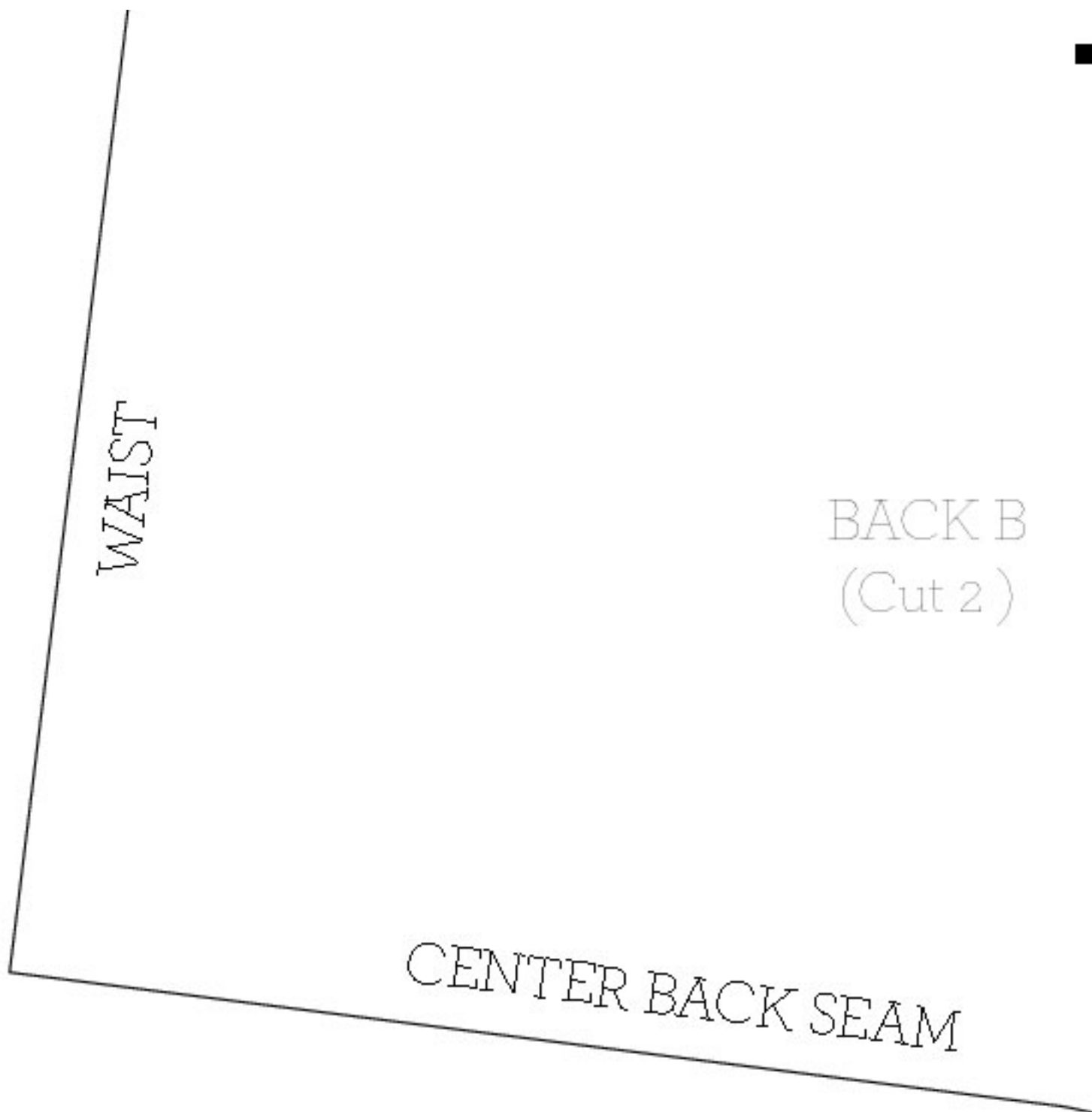
Bloomers

Part:1



FRONT
(Cut 2)

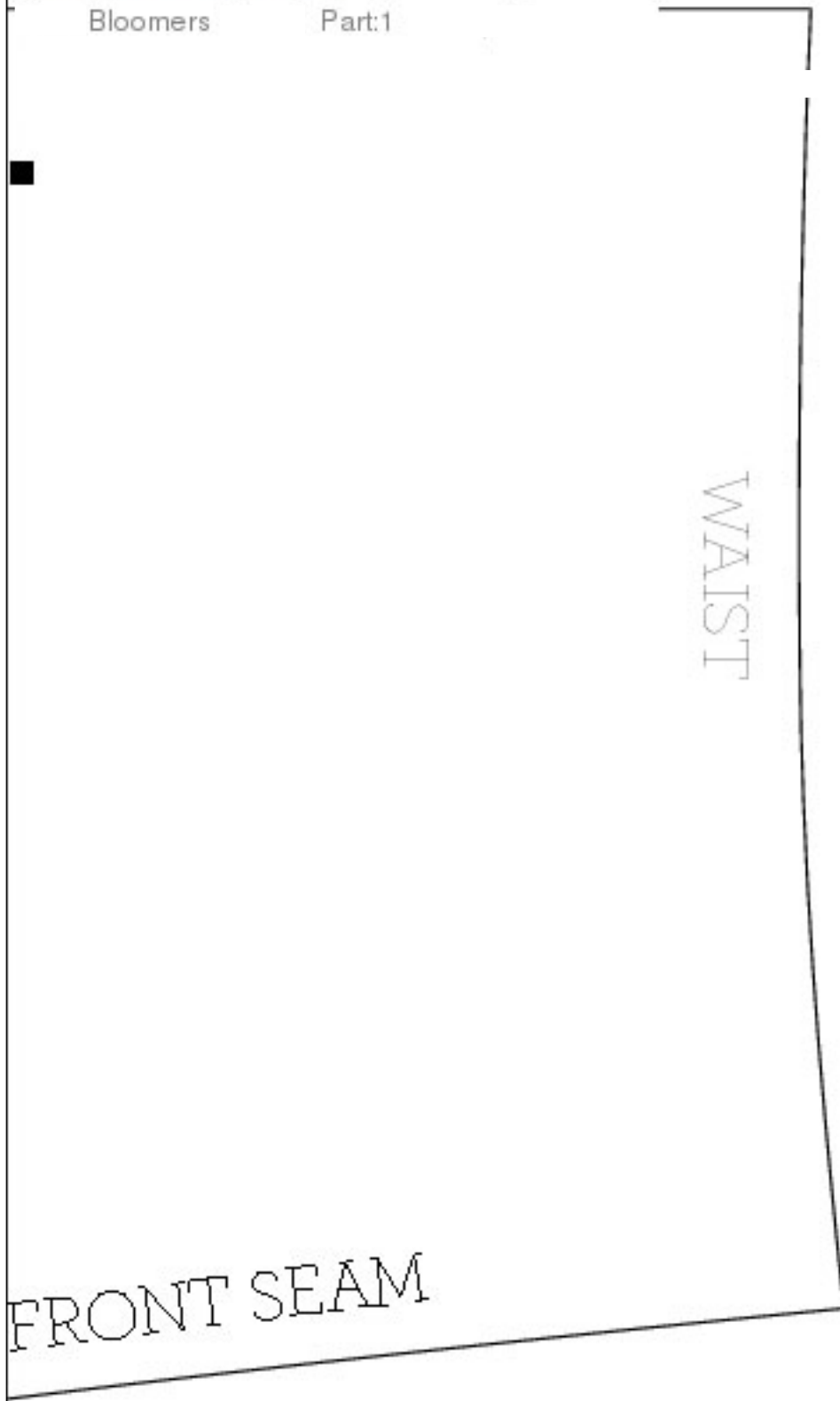
CENTER



Row A, Column 2

Bloomers

Part:1



WAIST

FRONT SEAM

Row B, Column 2

Bloomers

Part:1

