



MARTHA STEWART™ LIVING



★
**LIFETIME
WARRANTY**
ON ALL CABINETS*

* FOR AS LONG AS YOU OWN YOUR HOME.
SEE YOUR DESIGNER FOR DETAILS.

**CABINET, COUNTERTOP,
& HARDWARE SOLUTIONS**



KITCHENS THAT WORK

I've drawn upon my own homes as the inspiration for Martha Stewart Living™ kitchens—beautiful and functional cabinets, countertops, and hardware exclusively at The Home Depot®. Today, I'm proud to say that these are some of the best quality kitchens you'll find, and at prices well within your budget.

In this brochure you'll find kitchens in a wide range of affordable styles, with design options like PureStyle™ doors in beautiful colors, wonderful new textured PureStyle wood grains, and durable Viatera® quartz countertops. And because so much cooking, gathering, and entertaining revolves around this room, we offer the up-to-date features you need for a kitchen that really works. Explore this brochure for design inspiration, ideas for installing cabinetry in other rooms, and some of my favorite organizing tips all ready for you to try out in your new Martha Stewart Living kitchen.

Martha Stewart

Let Us Help!

Martha and The Home Depot Make Designing Your Kitchen Easy



SHOWN IN OX HILL PURESTYLE IN OCEAN FLOOR



MARTHA'S TIPS

Look for the TIP icons to find suggestions for working in your new kitchen.



MARTHA'S FEATURED ACCESSORIES

See Martha's picks for coordinating cabinets, countertops, and hardware.



MOST POPULAR

You won't find these beautiful PureStyle™ colors and wood grains anywhere else. Look for this Most Popular icon throughout the catalog.

CONTENTS

GET INSPIRED

- 04 Choose Purestyle
- 06 Weston
- 08 Gardner
- 10 Tipton
- 12 Landover
- 14 Maidstone
- 16 Ox Hill
- 18 Dunemere
- 20 Turkey Hill
- 22 Seal Harbor
- 24 Lacombe Avenue
- 26 Wellston
- 28 Wainscott
- 30 Perry Street
- 32 Acadia Park
- 34 Lily Pond

DESIGN YOUR KITCHEN

- 36 Choose Your Door Style
- 40 Choose Your Finish
- 42 Combine Colors
- 44 Get Organized
- 50 Decorate with Corbels
- 52 Apply the Details
- 56 Hatches
- 57 Contemporary Embellishments
- 58 Accent with Glass
- 60 Countertops
- 64 Fine Craftsmanship
- 66 Compare Materials

Exclusively at
THE HOME DEPOT!

Choose PureStyle

Beauty, quality, and affordability have made PureStyle our most popular finish! To get color with more even coverage than paint and lifelike wood grains easier to care for than the real thing, there's no better value—and you'll only find PureStyle from Martha Stewart Living at The Home Depot.



PURESTYLE COLOR

- Delivers satin-smooth, evenly applied color that's more durable than paint.
- Comes in a beautiful palette of Martha's favorite colors.

TEXTURED PURESTYLE

- Looks and feels just like natural wood grain.
- Won't expand or contract with changing conditions.

WHY PURESTYLE?

BEAUTY

- PureStyle doors are available in a palette of colors and chic wood grain finishes selected to complement your home.
- Door details and profiles are crisp and precise thanks to a unique construction process.

CAREFREE MAINTENANCE

- Cabinets resist heat, moisture, and stains.
- Food stains are easily removed with just a damp cloth.
- Mitered joints won't split or crack.
- The effects of light exposure and aging are minimal compared to painted or stained wood.

RESPECT FOR THE ENVIRONMENT

- Doors are made from a high percentage of recycled wood fiber materials.
- The manufacturing process meets the requirements for low-formaldehyde emissions.

See page 66 to learn more!

11 PureStyle Doors

PURESTYLE DOORS



Dunemere Landover Maidstone



Ox Hill Perry Street Seal Harbor



Turkey Hill Wainscott Wellston

TEXTURED PURESTYLE DOORS



Gardner Tipton

Weston

A horizontal-grain laminate replicates the look and feel of natural wood in a sophisticated gray.



TEXTURED LAMINATE!

SHOWN IN WESTON TEXTURED LAMINATE IN TIMBERLINE / OCEAN FLOOR BOX AND MAIDSTONE PURESTYLE IN OCEAN FLOOR



OFFICE NOOK

Turn a spare corner into a helpful work station, complete with a desk, glass-front cabinets for books, and a hidden message center.

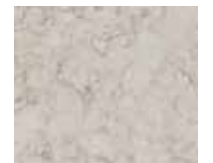


FEATURED PRODUCTS



WESTON

ADDITIONAL COLORS AVAILABLE
See pages 40-41



SNOWCAP
VIATERA® QUARTZ



BEDFORD NICKEL
862337

TIP

A single open shelf mounted well above the sink and stove holds the items you use most frequently.

Gardner

Gardner updates the simplicity of Shaker design by adding a chic, straight-grain finish. This textured PureStyle door is rendered in a natural, sophisticated gray, creating a beautiful look at a very affordable price.



SHOWN IN GARDNER TEXTURED PURESTYLE IN TIMBERLINE / SHARKEY GRAY BOX AND TRIM



TABLET HOLDER

Safely mount and charge tablets and phones away from countertop messes while keeping them accessible as you cook.

FEATURED PRODUCTS



GARDNER



COVE
VIATERA® QUARTZ



BEDFORD NICKEL
940118



BEDFORD NICKEL
940052

TIP

Deep drawers are ideal for storing bulky items, allowing for easier access.

Tipton

Our Tipton kitchen is the perfect blend of traditional and modern style, and a seamless fit in any home. Shaker inspired, it features a clean interior bevel and our textured PureStyle finish in Orchard.



SHOWN IN TIPTON TEXTURED PURESTYLE IN ORCHARD / BROOK TROUT BOX



COOKING UTENSIL DIVIDER

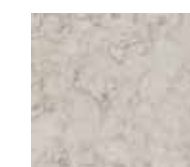
The unique angle of these drawer dividers makes it easy to store extra-long tools like rolling pins.



FEATURED PRODUCTS



TIPTON



SNOWCAP
VIATERA® QUARTZ



BEDFORD NICKEL
862337

TIP

Mix textured doors with a contrasting wood tone for a striking focal point.



Landover

The new Landover door is an updated traditional look inspired by our original Skylands kitchen. Here, the simplicity of a recessed flat panel moves the style a shade toward the modern, while maintaining its classic elegance and warmth.



PURESTYLE
MOST POPULAR

SHOWN IN LANDOVER PURESTYLE IN SHARKEY GRAY

FEATURED PRODUCTS



LANDOVER

ADDITIONAL COLORS AVAILABLE
See pages 40-41



BEDFORD NICKEL
852272



BEDFORD NICKEL
851216

ROSETTES & ACCENTS

A gorgeous island looks even more impressive with fielded rosettes and fluted fillers.





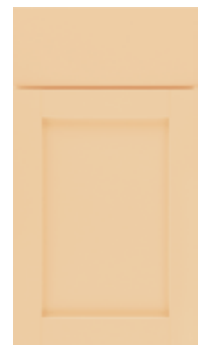
Maidstone

Country sensibility comes through in this 19th-century Shaker design completed with contemporary touches. Flat-panel doors enhanced with stacked crown moulding offer rustic accents that equally suit a country or urban home.



SHOWN IN MAIDSTONE PURESTYLE IN FORTUNE COOKIE

FEATURED PRODUCTS



MAIDSTONE

ADDITIONAL COLORS AVAILABLE
See pages 40-41



SOFT IRON
854945



SOFT IRON
854813

TIP

Make your room look lighter and airier with open shelving.

TOEKICK VALANCE

A sink base with toekick valance is both decorative and functional, allowing you to stand closer to the sink.





Ox Hill

This turn-of-the-century country kitchen has a vintage sensibility. Flat center panels, optional vertical batten doors, and intricate corbels create a warm, welcoming atmosphere.



PURESTYLE
MOST POPULAR

SHOWN IN OX HILL PURESTYLE IN SHARKEY GRAY

INSIDE MARTHA'S REMODELED KITCHEN

To make the most of the available space, Martha used base cabinets with pull-out shelves for pots and pans, box column pull-outs for spices, and wood cutlery organizers for sorting utensils. Ox Hill cabinets with vertical batten doors hold serving dishes, while open shelves keep everyday dinnerware handy.

FEATURED PRODUCTS



OX HILL

ADDITIONAL COLORS AVAILABLE
See pages 40-41



TUNDRA
CORIAN



BEDFORD NICKEL
939788



BEDFORD NICKEL
939656

Dunemere

This sleek design is infused with the relaxed feel of a contemporary beach house. Blending early Shaker construction with modern embellishment, it features clean lines and top and bottom frame beading.



SHOWN IN DUNEMERE PURESTYLE IN PICKET FENCE



ISLAND LIFE

There's nothing better than a big island, if you have the room, and accenting it with decorative detailing makes it as pretty as it is practical. Plus, it allows others to share in the cooking.



FEATURED PRODUCTS



DUNEMERE

ADDITIONAL COLORS AVAILABLE
See pages 40-41



BEDFORD MARBLE
CORIAN



BEDFORD NICKEL
939854



BEDFORD NICKEL
939821

TIP

Install cabinets around and above the refrigerator to maximize storage.

Turkey Hill

This balanced Federal-style kitchen, based on Martha's first home, is designed with glass-paneled cabinetry and fluted fillers to frame its richness and color. It makes a charming setting, whether you are preparing a simple supper or a large holiday feast.



SHOWN IN TURKEY HILL MAPLE IN BRIDLE BROWN & PURESTYLE IN BEACH SAND



PURESTYLE
MOST POPULAR

APPLIANCE CENTER

Keep appliances easy to access, yet tucked away when not in use, for a clutter-free kitchen.

Also shown on page 47.



FEATURED PRODUCTS



TURKEY HILL

ADDITIONAL COLORS AVAILABLE
See pages 40-41



RAVINE
CORIAN



BEDFORD NICKEL
852470



BEDFORD NICKEL
862337



Create a cohesive look by matching hardware and faucet finishes.

Seal Harbor

Domestic productivity begins here in a kitchen inspired by the rustic appeal of a New England coach house and stable, but with the needed functionality of a modern home.



SHOWN IN SEAL HARBOR PURESTYLE IN SHARKEY GRAY

FEATURED ACCESSORIES



SEAL HARBOR

ADDITIONAL COLORS AVAILABLE
See pages 40-41



SHORELINE
CORIAN



POLISHED NICKEL
938765

TIP

A decorative end panel dresses up the end of an island, adding a beautiful, eye-catching design element.



PURESTYLE
MOST POPULAR

ORNATE CORBEL

These beautiful corbels add practical support to shelves or extended island counters.



Lacombe Avenue & Weston

Embracing minimalism's clean, crisp lines, this modern design has an urban sensibility. The high gloss white finish wipes clean easily and is a pleasure to touch. Sleek, smooth, and polished, Lacombe Avenue blends efficiency with elegance.



SHOWN IN LACOMBE AVENUE LAMINATE IN HIGH GLOSS PICKET FENCE & WESTON LAMINATE IN PERSIAN GRAY

FEATURED PRODUCTS



LACOMBE AVENUE

ADDITIONAL COLORS AVAILABLE
See pages 40-41



WARM SOAPSTONE
CORIAN



POLISHED NICKEL
862205



POLISHED NICKEL
862172

TIP

Open shelving creates a space to display your favorite dishes and glassware.



EDGE BANDING

Lacombe Avenue offers a choice of two edge bandings to pair with High Gloss Picket Fence finish. Two-color Metallic (left) with High Gloss Picket Fence coordinates handsomely with stainless steel appliances, while a matching High Gloss Picket Fence (above) option lends a clean, seamless look.

Wellston

A contemporary twist on traditional style, Wellston draws inspiration from authentic American homes. Sophisticated color options and embellishments work together to create an easy elegance that adapts nicely to any home setting.



SHOWN IN WELLSTON PURESTYLE IN SILHOUETTE



TOP HINGE DOORS

Top hinge doors create accessible storage while providing a unique design feature. The Lid Stay hinge holds the door in the up position, allowing both hands to remain free.



FEATURED PRODUCTS



WELLSTON

ADDITIONAL COLORS AVAILABLE
See pages 40-41



BEDFORD MARBLE
CORIAN



BEDFORD NICKEL
940118



BEDFORD NICKEL
940052

TIP

Double your counter functionality with a pair of islands, one on wheels and one stationary.



THINK
OUTSIDE
THE
Kitchen

Wainscott

Enjoy the classic good looks and versatile value of Wainscott. An echo of Martha's popular Turkey Hill design, Wainscott features partial overlay door styling for the budget-conscious consumer. It impresses in an entryway or laundry room as well as in the kitchen.



PURESTYLE
MOST POPULAR

SHOWN IN WAINSCOTT PURESTYLE IN PICKET FENCE

BENCHMARK

Base and crown moulding add a finished look to this functional entry ensemble.



FEATURED PRODUCTS



WAINSCOTT

ADDITIONAL COLORS AVAILABLE
See pages 40-41



TUNDRA
CORIAN



POLISHED NICKEL
939524



POLISHED NICKEL
854516

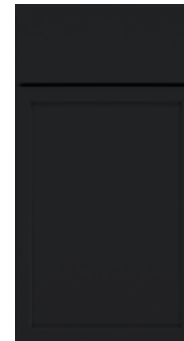
Perry Street

Drawing inspiration from city dwellings, the Perry Street kitchen is a sophisticated mix of dramatic color and metallic styling. This modern look is easily adapted to any style.



SHOWN IN PERRY STREET PURESTYLE IN SILHOUETTE

FEATURED PRODUCTS



PERRY STREET

ADDITIONAL COLORS AVAILABLE
See pages 40-41



SHORELINE
CORIAN



BEDFORD NICKEL
940118



BEDFORD NICKEL
940052

TIP

It's easy to clean PureStyle cabinets; simply wipe with a damp cloth to remove food stains.



DOUBLE OVEN CABINET

Combine your oven and microwave in one efficient and space-saving cabinet.

THINK
OUTSIDE
THE
Kitchen



Acadia Park

With a nod to architectural details of the past, Acadia Park celebrates the history of American homes. A molded channel offsets each door's solid center panel and broad frame in a style embraced by traditional designers.



SHOWN IN ACADIA PARK MAPLE IN ACORN

FEATURED PRODUCTS



ACADIA PARK

ADDITIONAL COLORS AVAILABLE
See pages 40-41



RAVINE
CORIAN



BEDFORD NICKEL
852272



BEDFORD NICKEL
851216

CROWN MOULDING

The simplest design accents are often the most beautiful. Crown moulding adds continuity and personality to the room.





Lily Pond

This timeless design is inspired by the sophisticated yet simple woodwork found in Martha's modest 19th-century Hamptons cottage. Long, triple-reebed center panels and distinctive finish options complete the classic look.



SHOWN IN LILY POND CHERRY IN RUSSET - MOLASSES HIGHLIGHT

FEATURED PRODUCTS



LILY POND

ADDITIONAL COLORS AVAILABLE
See pages 40-41



ACADIA
CORIAN



BEDFORD BRASS
939260



BEDFORD BRASS
55011

PIERCED CORBELS

Embellishments work best when they are as practical as they are beautiful. Add a simple and elegant dowel rod with pierced corbels to keep your utensils always within reach.



Door Styles

CHOOSE YOUR DOOR STYLE

Select the door that's right for you, then choose from the finish options on the following pages.

PURESTYLE™



Dunemere



Landover



Maidstone



Perry Street



Seal Harbor

Stable Brace Accent Door





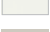






Seal Harbor



Turkey Hill

Finish Colors

-  Beach Sand
-  Fortune Cookie
-  Heavy Cream
-  Ocean Floor
-  Picket Fence
-  Sharkey Gray
-  Silhouette
-  Timberline (Textured)
-  Orchard (Textured)



Ox Hill



Ox Hill

Double Batten Accent Door



Ox Hill

Vertical Batten Accent Door



Wainscott

5-piece drawer front on PureStyle
Slab drawer front on wood



Wellston



Gardner

5-piece drawer front standard
Slab drawer front also available



Tipton

5-piece drawer front standard
Slab drawer front also available

TEXTURED PURESTYLE™

Door Styles

CHOOSE YOUR DOOR STYLE

Select the door that's right for you, then choose from the finish options on the following pages.

Finish Colors

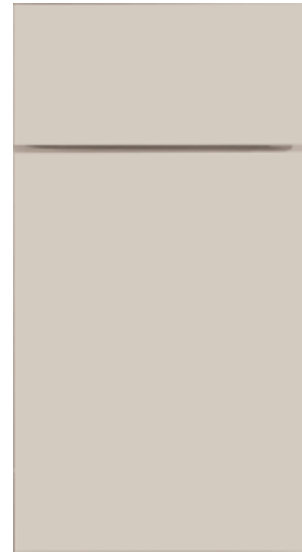
-  Musket
-  Persian Gray
-  High Gloss Picket Fence
-  High Gloss Sharkey Gray
-  Gardner
-  Tipton
-  Matte Silver
-  Acorn
-  Bridle Brown
-  Ground Nutmeg
-  Russet
-  Sesame
-  Acorn - Molasses Highlight
-  Bridle Brown - Rum Highlight
-  Ground Nutmeg - Rum Highlight
-  Russet - Molasses Highlight
-  Sesame - Rum Highlight

LAMINATE



Weston

HIGH GLOSS LAMINATE



Lacombe Avenue

Lacombe Avenue Edgbanding Options

Metallic



High Gloss Picket Fence



Matching



High Gloss Picket Fence

High Gloss Sharkey Gray

CHERRY | MAPLE



Acadia Park

Cherry, Maple



Dunemere

Maple



Landover

Maple



Lily Pond

Cherry

TEXTURED LAMINATE



Weston

MATTE SILVER FRAME WITH FROSTED GLASS



Perry Street



Weston



Maidstone

Cherry & Maple



Turkey Hill

Maple



Wainscott

Cherry, Maple

Cabinet Finishes

CHOOSE YOUR FINISH COLOR

Once you have selected a door style, choose a PureStyle, laminate, or wood grain finish.

PURESTYLE



TEXTURED PURESTYLE



LAMINATE

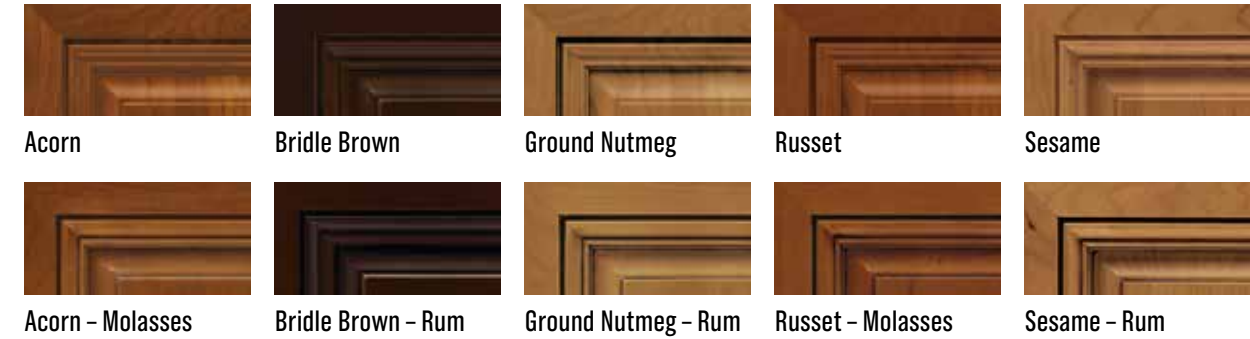


TEXTURED LAMINATE

HIGH GLOSS LAMINATE



CHERRY Also available in Unfinished.



MAPLE Also available in Unfinished.



For box options with textured PureStyle and laminate doors, see Mix & Match section on page 43.

Combine Colors

30 combinations to create the perfect style

MIX & MATCH BOX, DOOR & MOULDING

Have fun with your design and create a kitchen that is as unique as you are. Exclusive to Martha Stewart Living cabinetry, our customization options include six box colors you can mix and match with four cabinet styles. And when it comes to moulding, you can choose to match the door or use the color of the cabinet box. See the opposite page to view all of our box color options.

*Matte Silver is only available on toekick



CABINET BOX & MOULDING COLORS



GARDNER (Door Style)
Timberline (Door Color)



Shown on Sharkey Gray Box

TIPTON (Door Style)
Orchard (Door Color)



Shown on Brook Trout Box

LACOMBE AVENUE (Door Style)
High Gloss Picket Fence (Door Color)



Shown on Picket Fence Box

LACOMBE AVENUE (Door Style)
High Gloss Sharkey Gray (Door Color)



Shown on Sharkey Gray Box

WESTON (Door Style)
Musket (Door Color)



Shown on Bridle Brown Box

WESTON (Door Style)
Persian Gray (Door Color)



Shown on Sharkey Gray Box

WESTON (Door Style)
Orchard (Door Color)



Shown on Bridle Brown Box

WESTON (Door Style)
Timberline (Door Color)



Shown on Brook Trout Box

Get Organized

SMART ORGANIZATION

These features can multiply your kitchen's storage capacity and make tasks smoother and less stressful as you cook and entertain.



INGENIOUS ORGANIZATION

This two-drawer cabinet has a roll tray to keep your table linens flat and a pegged dish organizer for greater space efficiency.



COOKBOOK RACK

Keeping the cookbook off the counter and out of your ingredients is a smart solution.



DOUBLE WASTEBASKET

Trash stays hidden behind a pull-out door rather than sitting in plain view.



MESSAGE CENTER

A message center helps organize the family's day.

BASE WITH ROLL TRAYS

Bring items directly to you with a gentle pull of the independently sliding roll trays. Roll trays feature a raised edge, preventing items from tumbling over the side, and are adjustable to the height of stored items.



STAINLESS STEEL TILT-OUT TRAY

Turn an unused space into specialized storage for sponges and scrubbers.



BLIND CORNER BASE WITH PULL-OUT

Every piece of cookware, no matter how big or small, is easy to get to in this sophisticated cabinet.



BASE ROLL-OUT TRAY DIVIDER
No more struggling to retrieve cookie sheets — pull them right out for easy access!



SUPERCABINET™

Roll trays and wire pull-outs put everything within reach, and there's no need to stop there. Wire door racks keep smaller items right at hand when you need them.



CORNER CABINET
A corner lazy susan with wide doors makes it easy to store cookware and reduces wasted space.



WALL SPICE CABINET
A convenient middle-section spice cabinet swings out for easy access.



PANTRY PULL-OUT

Maximize space whatever size your kitchen may be. Smart storage ideas like this pantry pull-out keep spices and smaller items at your fingertips yet neatly out of sight.



TIERED CUTLERY DIVIDER
Double the storage of flatware and cooking utensils with a tiered cutlery divider.



UTENSIL ORGANIZER
Angled slots make it easy to store long-handled cooking utensils and keep them organized.



CUTLERY INSERT ORGANIZER
Organize small items that would otherwise be lost in a cluttered drawer.

COOKWARE COMMON SENSE

This dual pull-out keeps about a dozen pots and pans within easy reach, including the lids. With all your cookware at your fingertips, it's easy to whip up something delicious.



SPICE PULL-OUT

Finding it tough to keep your spices in order? Use this ingenious space-saving pull-out rack that fits comfortably between cabinets and drawers.



TOEKICK DRAWER

One of our most popular modifications, this drawer utilizes otherwise wasted space beautifully. We've removed the decorative pulls and made Push-To-Open Guides a standard feature.



SINK BASE CABMAT™

Our removable Cabmat handily contains any spills or leakage that can occur beneath the sink.



ORGANIZE POTS AND PANS

A convenient roll tray stores pots and pans, with lids and other small cookware on tiered shelving.



WINE RACK AND ORGANIZER

It's essential to have the right wine ready for unexpected guests. Thoughtfully designed racks and small box drawers to hold accessories are simple yet useful storage spaces.



APPLIANCE CENTER

Keep appliances easy to access, yet tucked away when not in use, for a clutter-free kitchen.

Also shown on page 21.

Decorate With Corbels

WHY I LOVE CORBELS!

“Corbels are a perfect example of how function and beauty are inseparable in my kitchens. The right corbel not only provides structural support, but it can also reinforce the style of the whole room. I use them beneath shelves and extended countertops, and also as decorative accents under open cabinetry.”

Martha Stewart



Fretted Corbel



Pierced Corbel



Scrolled Corbel



Ornate Corbel



Scullery Corbel



Pantry Corbel



Art Corbel



Federal Corbel



Fillet Corbel



Stayed Corbel

Apply the Details



Country Crown Moulding



Solid Wood Victorian Crown Moulding



Scrolled Crown Moulding



Revival Base Moulding



Bead Base Moulding



Ornate Base Moulding



LIGHT RAIL

Accent the bottoms of wall cabinets with decorative light rails. Intended as a shield for lighting installed below the cabinet, light rails can take on other roles as well. Enhance your design with our selection of styles.



WOOD HOODS

Choose a wood hood to follow your design theme and blend seamlessly with your cabinetry.



GEORGIAN CAPITAL BLOCK FILLER

This decorative filler is more than pretty—it's practical, too.



STYLISH ACCENTS

Stable rosettes and fluted fillers round out the coach house look.



WINE RACK
Display and access your favorite wines and glassware in cabinetry perfect for entertaining.



FURNITURE DETAILS

Furniture details make any piece stand apart. Create interesting accent furniture that coordinates beautifully with your cabinet style.



TULIP FOOT
The simplest design accents, like tulip footing, are often the most beautiful.



CLEAN LINED FLOATING SHELVES
A smart choice for modern kitchens, these shelves keep often-used items conveniently close at hand, and they are great for showcasing a prized collection or cherished family heirlooms. In minimalist designs, floating shelves can add visual interest, introducing pattern and texture with a light touch.



SEATING AREA

Here's a beautiful way to double the functionality of cabinetry: install a set of deep drawers at floor level—good for storing items you use infrequently—and add cushions to create extra seating.



TWO-SIDED TAPERED ISLAND LEG
Sleek lines add dimension to contemporary spaces.



TAPERED ISLAND LEG
The perfect transitional leg for eclectic styling.



SPOOL LEG
Tradition at its finest, the spool leg complements many designs.

Hutches

FURNITURE FOR THE KITCHEN

One exciting feature of our cabinetry is the ability to create standalone pieces with the beauty and detail of finished furniture. At the same time, we can make units that lend themselves better to use in the kitchen; shallower cabinets and shelves are helpful for display and can fit more easily into tight kitchen spaces.



Accent Hardware

TEE FOOT

Available in Brushed Nickel and Polished Chrome.

ANGLED FOOT

Available in Brushed Nickel and Polished Chrome.

SQUARE FOOT

Available in Brushed and Polished Stainless Steel.

ROUND FOOT

Available in Brushed and Polished Stainless Steel.

FINGER PULL

Sleek, edge mount hardware with two size options. Available in Brushed Nickel.

TRUSS CORBEL

Available in Stainless Steel.

CRESCENT CORBEL

Available in Brushed Nickel.

SHELF SUPPORT BRACKET

Sold in pairs. Available in Satin Nickel.

CASTER

(Not shown) Locking caster for use on carts or floating islands.

TOUCH LATCH

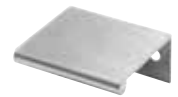
(Not shown) Convenient push-to-open mechanism installed in-frame for a streamlined look for full overlay styles.



Tee Foot
Brushed Nickel



Tee Foot
Polished Chrome



Finger Pull



Angled Foot
Brushed Nickel



Angled Foot
Polished Chrome



Truss Corbel
Stainless Steel



Square Foot
Brushed Stainless Steel



Square Foot
Polished Stainless Steel



Crescent Corbel
Stainless Steel



Round Foot
Brushed Stainless Steel



Round Foot
Polished Stainless Steel



Shelf Support Bracket
Satin Nickel

Accent with Glass

WHY GLASS?

Introducing glass doors to your design is a wonderful way to open up the room's look. Textured glass adds depth, whether it's the nuance of beveled edges or the contemporary chic of frosted glass. Art glass provides character in the form of timeless patterns or modern lines.

ART



Cloister



Penthouse



Trellis



Webwork

CLEAR AND TEXTURED



Clear



Beveled



Frosted



Fine Reeded



Reeded



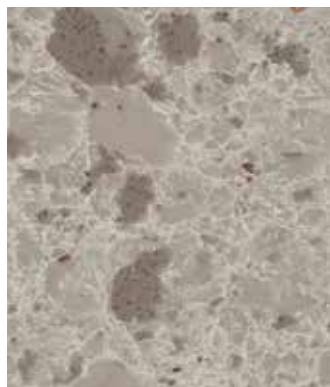
Crystalline

Specially designed
to work with our cabinetry!

Viatera® Quartz Countertops



Snowcap



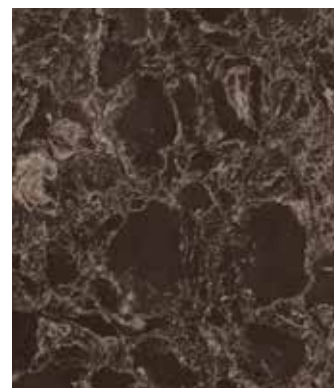
Flagstone



Cove



Sierra



Shadow



Midnight

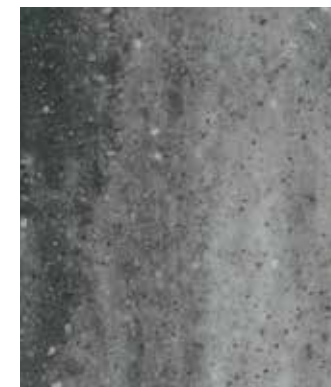
WHY MARTHA STEWART LIVING™ VIATERA® QUARTZ?

- It's easier to clean than other stone options, and requires no sealing to remain nonporous.
- Withstands most everyday stains while remaining scratch- and crack-resistant, and inhibits bacterial growth.
- Will not burn or scorch under normal cooking temperatures.
- Inspired by the colors and veining of natural marbles.

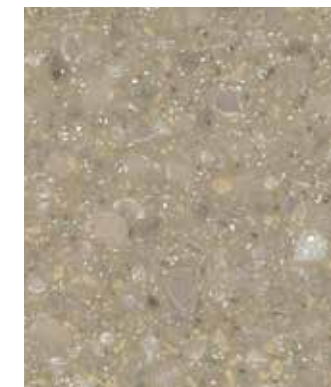
Corian Countertops



Acadia



Bedford Marble



Laurel Branch



Ravine



Sea Salt



Shoreline



Tundra



Warm Soapstone

WHY MARTHA STEWART LIVING™ BY CORIAN®?

- Marks and scratches are easily removed, restoring the countertop to its original beauty.
- Spills do not permeate the surface.
- Made of DuPont Corian, offering richness and complexity in a custom selection of colors.
- Inspired by Martha's love of natural stone; Bedford Marble, Warm Soapstone, and Sea Salt are all derived from countertops in her own kitchens.

Match Countertops & Cabinets

We've designed every countertop with our cabinets in mind, using multi-toned particulates that work with multiple cabinet colors. Try the pairings our designers recommend, or make a new combination that's all your own!

		VIATERA® QUARTZ						
		Sierra	Snowcap	Flagstone	Cove	Shadow	Midnight	
PURESTYLE	Beach Sand							•
	Fortune Cookie	•			•			
	Heavy Cream	•	•	•	•	•		•
	Ocean Floor		•	•	•			
	Picket Fence	•	•	•	•			•
	Sharkey Gray	•	•	•	•	•		•
	Silhouette	•		•	•			
TEXTURED PURESTYLE	Timberline		•	•	•	•		
	Orchard		•	•	•	•		
LAMINATE	High Gloss Picket Fence	•	•		•	•		•
	High Gloss Sharkey Gray	•	•	•	•	•		•
	Musket		•	•	•			
TEXTURED LAMINATE	Persian Gray			•	•	•		
	Timberline		•	•	•	•		
WOOD - CHERRY	Orchard		•	•	•	•		
	Acorn		•	•	•	•		•
WOOD - MAPLE	Bridle Brown	•	•	•	•			
	Ground Nutmeg	•	•	•	•			•
	Russet		•			•		•
	Sesame	•	•					•
	Acorn		•	•	•	•		•
WOOD - MAPLE	Bridle Brown	•	•	•	•			
	Ground Nutmeg		•	•	•			•
	Russet				•	•		•
	Sesame		•					•
	Acorn		•	•	•	•		•

		CORIAN							
		Sea Salt	Shoreline	Ravine	Acadia	Bedford Marble	Warm Soapstone	Tundra	Laurel Branch
	Beach Sand	•			•				•
	Fortune Cookie	•	•	•		•	•		•
	Heavy Cream	•					•		•
	Ocean Floor	•			•		•	•	•
	Picket Fence	•	•		•	•	•	•	•
	Sharkey Gray	•	•	•	•	•	•	•	
	Silhouette	•	•	•	•	•	•		
	Timberline	•	•						
	Orchard	•	•						
	H. G. Picket Fence	•				•		•	
	H. G. Sharkey Gray	•	•	•	•	•	•	•	
	Musket	•	•						
	Persian Gray	•	•				•		
	Timberline	•	•						
	Orchard	•	•						
	Acorn	•	•	•	•	•	•		
	Bridle Brown		•	•	•	•	•	•	•
	Ground Nutmeg	•	•	•	•				•
	Russet	•		•	•				
	Sesame	•	•	•	•				•
	Acorn	•	•	•	•	•	•		
	Bridle Brown	•	•	•	•	•	•	•	•
	Ground Nutmeg	•	•	•	•				•
	Russet	•		•	•				
	Sesame	•	•	•	•				•

Fine Craftsmanship

CONSTRUCTION FEATURES

These high-quality features come standard on all Martha Stewart Living cabinets. Choose our standard quality, or upgrade your construction options.



INTEGRATED QUIETCLOSE

Self-closing 6-way adjustable hinge engages before the door closes to prevent slamming.



FURNITURE BOARD

- All exposed interior and exposed exterior panel surfaces are laminated
- End panels, top, bottom, and toekick: 1/2" furniture board
- Back: 3/8" furniture board
- Adjustable shelves: 3/4" furniture board



UPGRADE

ALL PLYWOOD* LAMINATED (APL)

- All exposed interior and exposed exterior panel surfaces are laminated
- End panels, top, bottom, and toekick: 1/2" plywood
- Back: 3/8" plywood
- Adjustable shelves: 3/4" plywood



UPGRADE

ALL PLYWOOD* FINISHED (APF)

- All exposed interior and exposed exterior top and bottom surfaces are laminated
- Exterior end panel surfaces are finished veneer
- End panels, top, bottom, and toekick: 1/2" plywood
- Back: 3/8" plywood
- Adjustable shelves: 3/4" plywood



QUIETCLOSE™ IHC DRAWER & ROLL TRAY GUIDES

The integrated hydraulic cylinder (IHC) engages before the drawer closes to prevent slamming.



PREMIUM FULL EXTENSION DRAWER AND ROLL TRAY GUIDES

Undermounted concealed guides with QuietClose IHC mechanism extend drawers and roll trays fully.



DOVETAIL DRAWER BOXES & ROLL TRAYS

Clear-coated 3/4" nominal thick solid wood box constructed with dovetail joinery and fully captured, laminated plywood bottom.



FURNITURE PLYWOOD* END PANELS BOTH (FPEB)

3/4" thick plywood end panels creating a flush appearance.



UPGRADE

MATCHING INTERIOR PLYWOOD* (MIP)

- All exposed interior and exposed exterior panel surfaces are finished veneer
- End panels, top, bottom, and toekick: 1/2" plywood*
- Back: 3/8" plywood
- Adjustable shelves: 3/4" plywood



UPGRADE

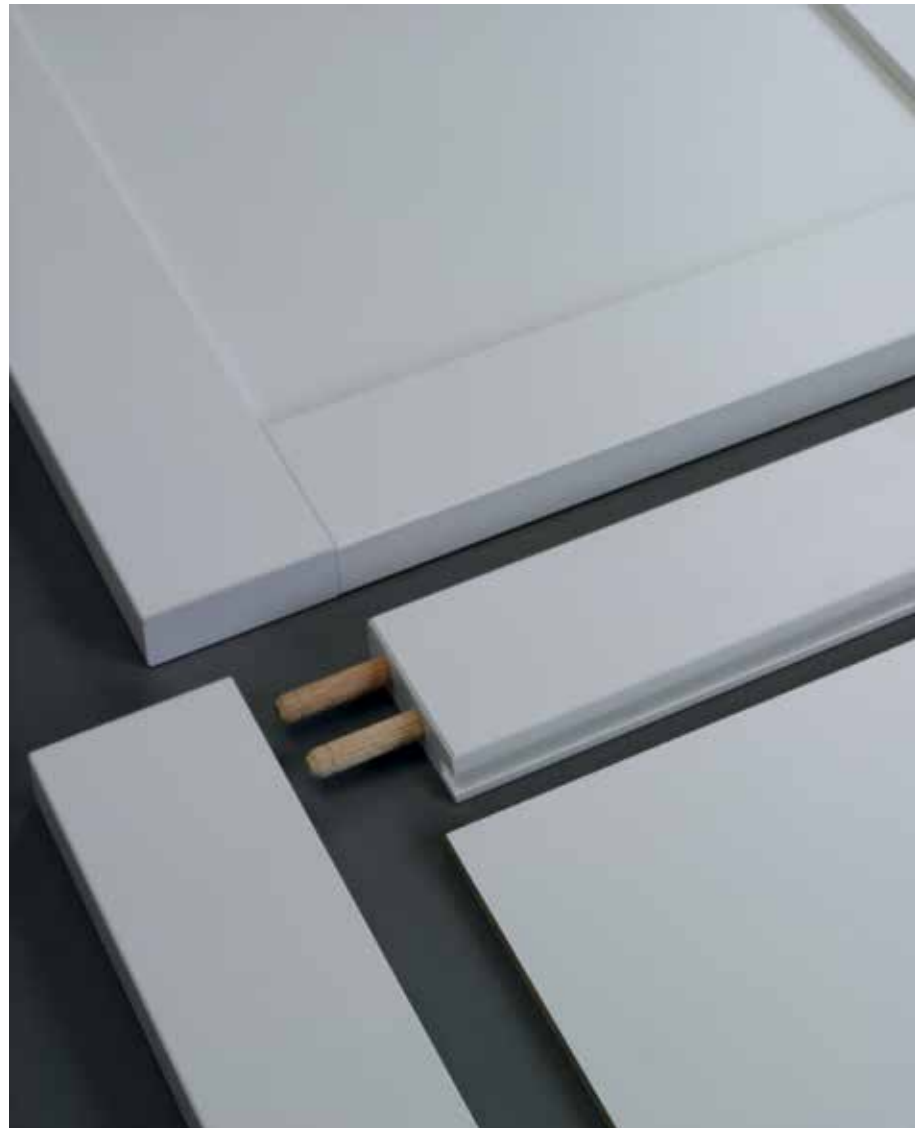
FULL DEPTH SHELF

A full depth shelf is a nice alternative when there is no need to store taller items in the base, allowing complete utilization of the cabinet depth.

Compare Materials

WHY PURESTYLE™?

PureStyle solid color doors deliver a satin-smooth surface while PureStyle wood grains offer a high definition embossed look and feel. Both provide the added advantages of superb durability and a lower price. Choose from a palette of colors and textured grain pattern options carefully selected to complement your home.



PureStyle Doors are wrapped for durability and a seamless look.



CONTINUOUS WRAP

PureStyle is wrapped fully around each individual door rail before they are joined together, so detailing and profiles are clean and crisp.

DURABILITY

Quality concerns such as delamination, roughness, peeling, and cracking are nonexistent.

STABILITY

The effects of UV exposure and aging are minimal in comparison to wood-finished products, and it performs above standard requirements for heat resistance.

CARE AND MAINTENANCE

PureStyle is resistant to moisture, as well as, stains from common foods and detergents. It can be cleaned easily with just a damp cloth.

See full list of features on page 4!



WHY WOOD?

CHERRY

Characterized by its red undertones, cherry may vary in color from white to a deep, rich brown. It is a close-grained wood with fairly uniform texture, revealing pin knots and curly graining. All wood will age with time and the finish will darken. This is especially true for cherry. This is a sought-after quality in cherry cabinetry, and those who select it expect this evolution.



MAPLE

This close-grained hardwood is predominantly white to creamy-white in color, with occasional reddish-brown tones. While maple typically features uniform graining as compared to other wood species, characteristic markings may include fine brown lines, wavy or curly graining, pecks, and mineral streaks. These traits are natural and serve to enhance maple's natural beauty.



WHY LAMINATE?

Laminate material has a sleek look that is ideal for modern kitchen styles with surfaces that are durable and easy to clean. Laminates feature design leading, high definition wood grain or high gloss materials on doors, drawer fronts, overlay fillers, and premium trim items. The surfaces are laminate based materials with an integrated top coat that provides superior beauty, durability, and performance. The core panel material is made of MDF to ensure a consistent and stable product. We also offer textured laminates in a palette of color options carefully selected to complement your home.



Light green cabinet with glass doors, containing glassware.

Light green cabinet with glass doors, containing glassware.

Open shelf holding several potted plants in terracotta pots.

Grey storage box with a label.

Straw broom hanging on the wall.

Yellow and green seed packet labeled "Good Starts".

Small wicker basket.

Small wicker basket.

Grey storage box with a label.

Grey storage box with a label.

Light green cabinet drawer.

Open shelf containing several terracotta pots and green storage bins.

Light green cabinet drawer.

Two black rubber boots with red tops.

Large metal watering can and bucket.

Two terracotta pots on the floor.

Small round white table with a glass of juice and a potted plant.

Wicker chair with a green cushion.

Several potted plants on a windowsill, including a purple-flowered plant and a green leafy plant.



SHOWN IN DUNEMERE PURESTYLE™ IN HEAVY CREAM

Styles, product availability, and construction may vary slightly from those shown in this catalog due to material availability and /or design evolution. Specifications are subject to change without notice. For more details see homedepot.com/marthastewart or check with your designer.

Product photography and illustrations have been reproduced as accurately as printing technologies permit. To ensure highest satisfaction, we strongly recommend you view an actual sample for best color, wood grain, and finish representation.

*The lifetime limited warranty protects the original purchaser for as long as they own their home to ensure that these products will be free from defects under normal use.

MasterBrand
Cabinets, Inc.

www.masterbrandcabinets.com



www.homedepot.com



MasterBrand Cabinets© 2015
Supersedes all prior versions
Printed in U.S.A.
2016-01/QUAD/147.3M
1100098810.