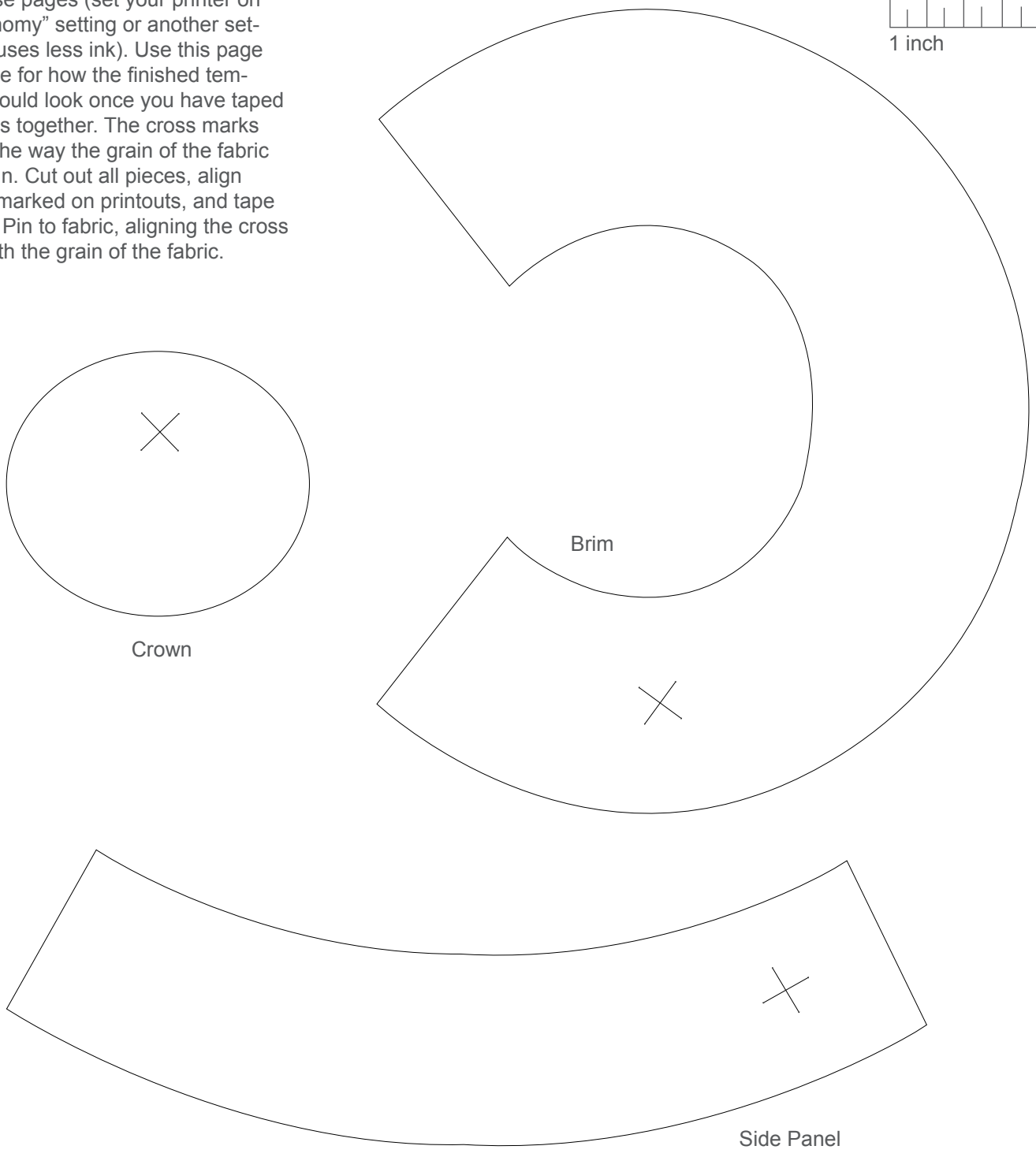


Print these pages (set your printer on the "economy" setting or another setting that uses less ink). Use this page as a guide for how the finished templates should look once you have taped the pieces together. The cross marks indicate the way the grain of the fabric should run. Cut out all pieces, align them as marked on printouts, and tape together. Pin to fabric, aligning the cross marks with the grain of the fabric.



Crown

Brim

Side Panel

