

**SMALL HOUSE**



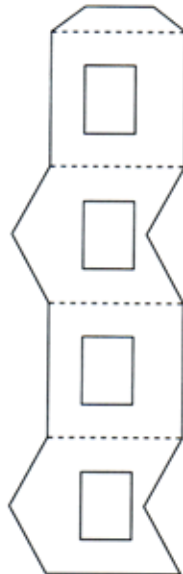
**belfry roof**



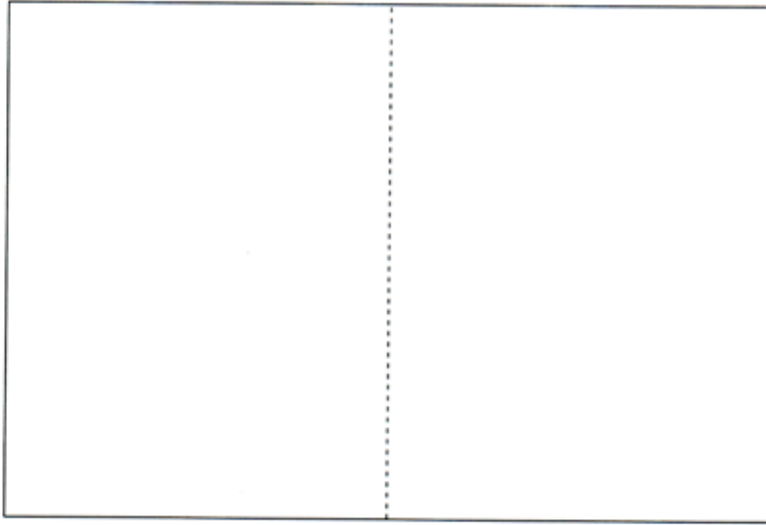
**roof over entry**



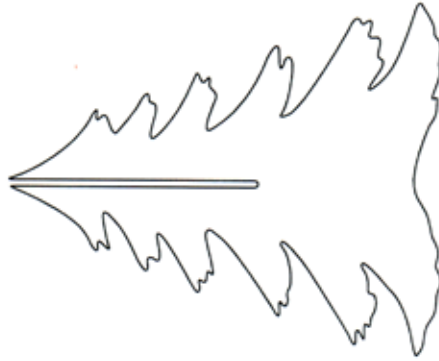
**chimney for small house only**



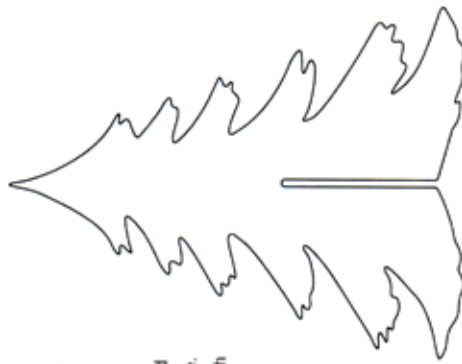
**belfry for schoolhouse only**



**door panel**



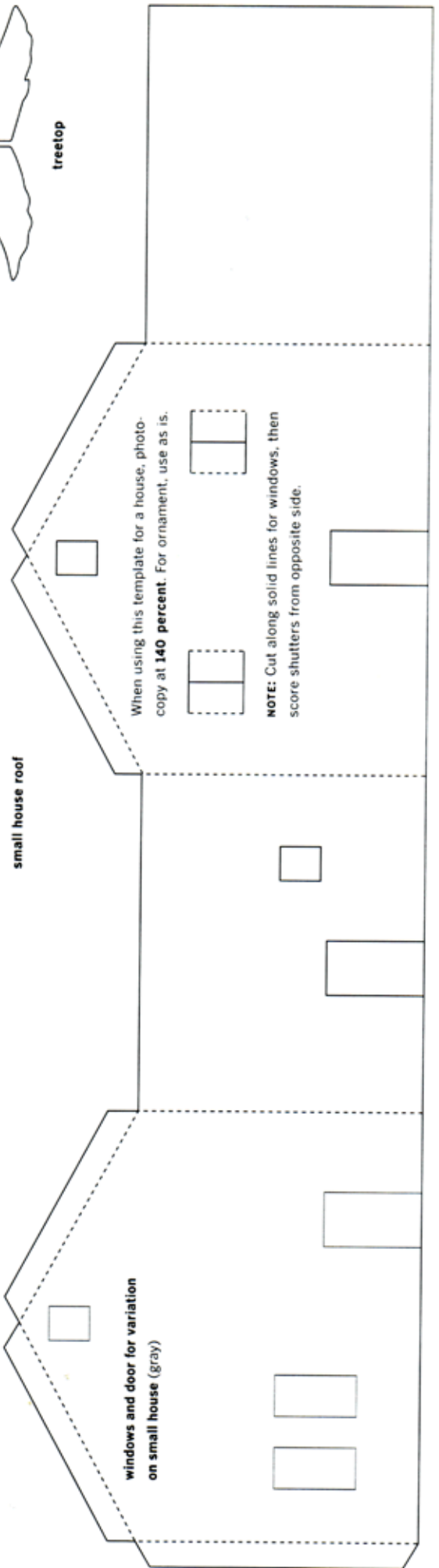
**tree bottom**



**treetop**

**NOTE:** Use the tree templates as you would for the house. Slip halves together. Prime. Paint. Coat with craft glue, and sprinkle with glass glitter and white glitter for snow.

**small house roof**



When using this template for a house, photocopy at **140 percent**. For ornament, use as is.

**NOTE:** Cut along solid lines for windows, then score shutters from opposite side.

**windows and door for variation on small house (gray)**